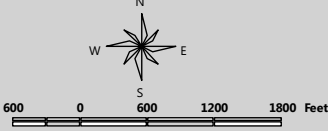
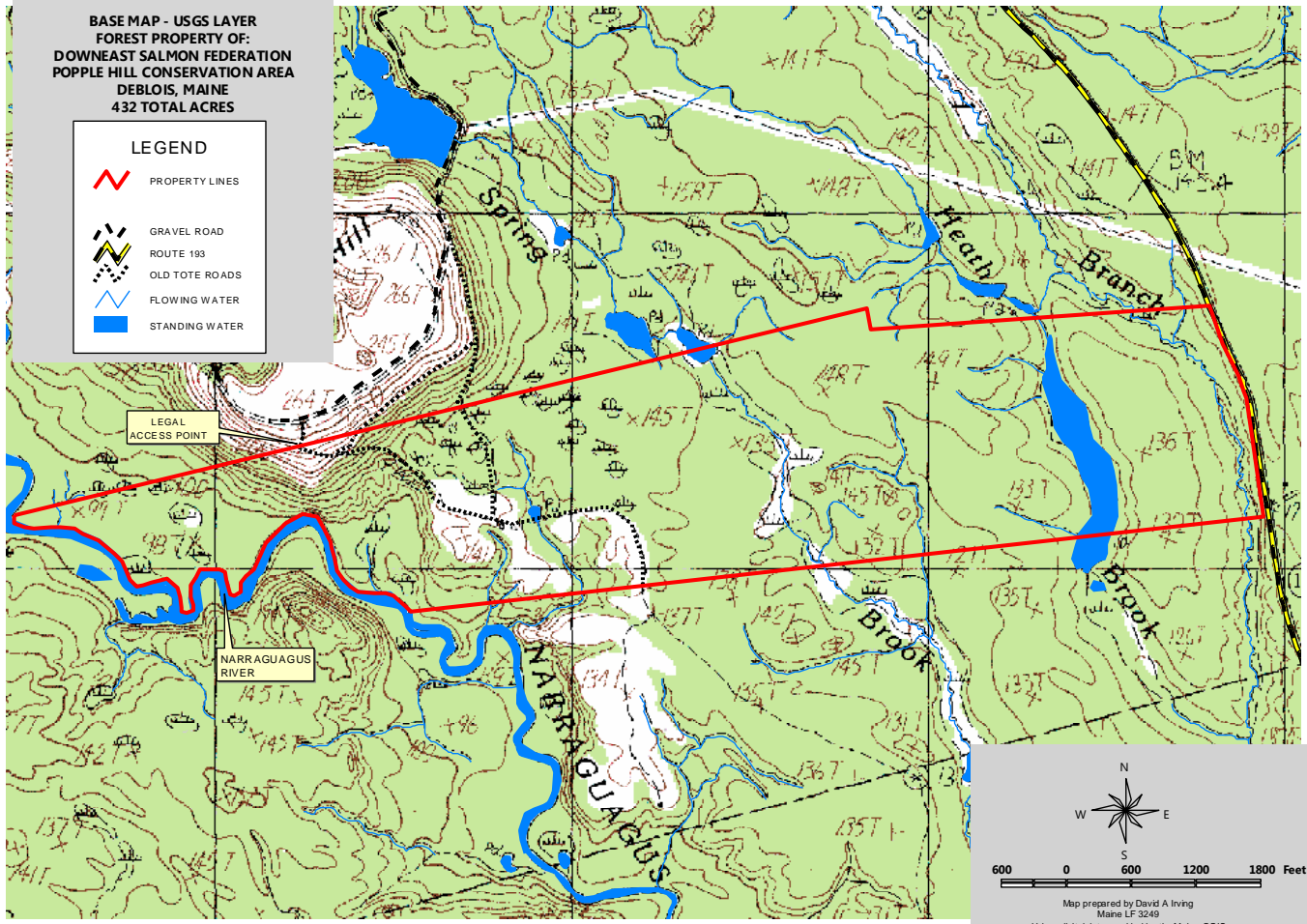


BASE MAP - USGS LAYER
FOREST PROPERTY OF:
DOWNEAST SALMON FEDERATION
POPPLE HILL CONSERVATION AREA
DEBLOIS, MAINE
432 TOTAL ACRES

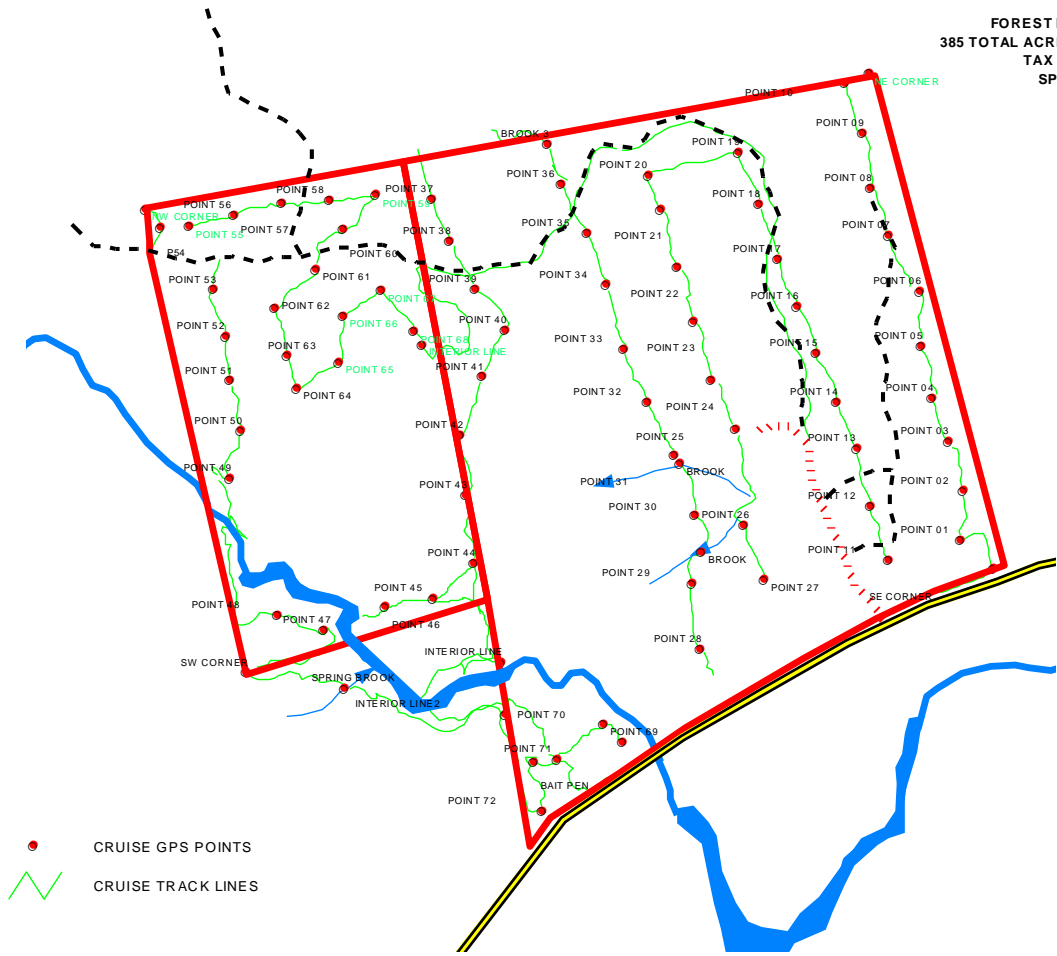
LEGEND

-  PROPERTY LINES
-  GRAVEL ROAD
-  ROUTE 193
-  OLD TOTE ROADS
-  FLOWING WATER
-  STANDING WATER



Map prepared by David A Irving
Maine LF 3249
Using digital data provided by the Maine OGIS
Map prepared on May 24, 2010
Map is not a legal survey

**CIULLA FOREST
FOREST INVENTORY CRUISE MAP
385 TOTAL ACRES (343 FORESTED - 69 POINTS)
TAX MAP 4 LOTS 5, 6, 7, 8
SPRINGFIELD, MAINE**



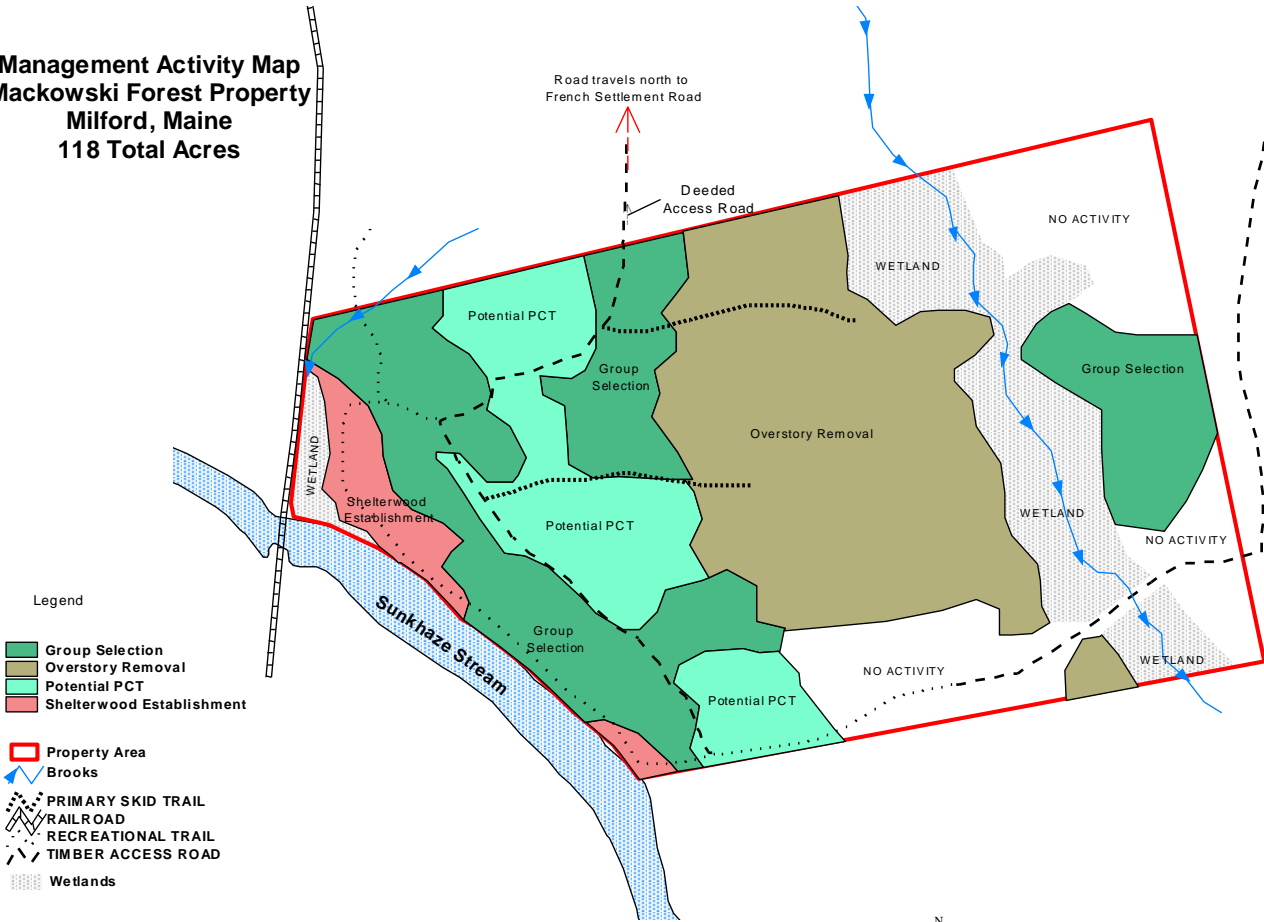
● CRUISE GPS POINTS
 ~ CRUISE TRACK LINES



500 0 500 Feet

Map prepared by David Irving
 Maine LPF 3249
 Using data from Maine OGIS
 and GPS data from the fieldwork.
 Map is not a legal survey
 December 30, 2008

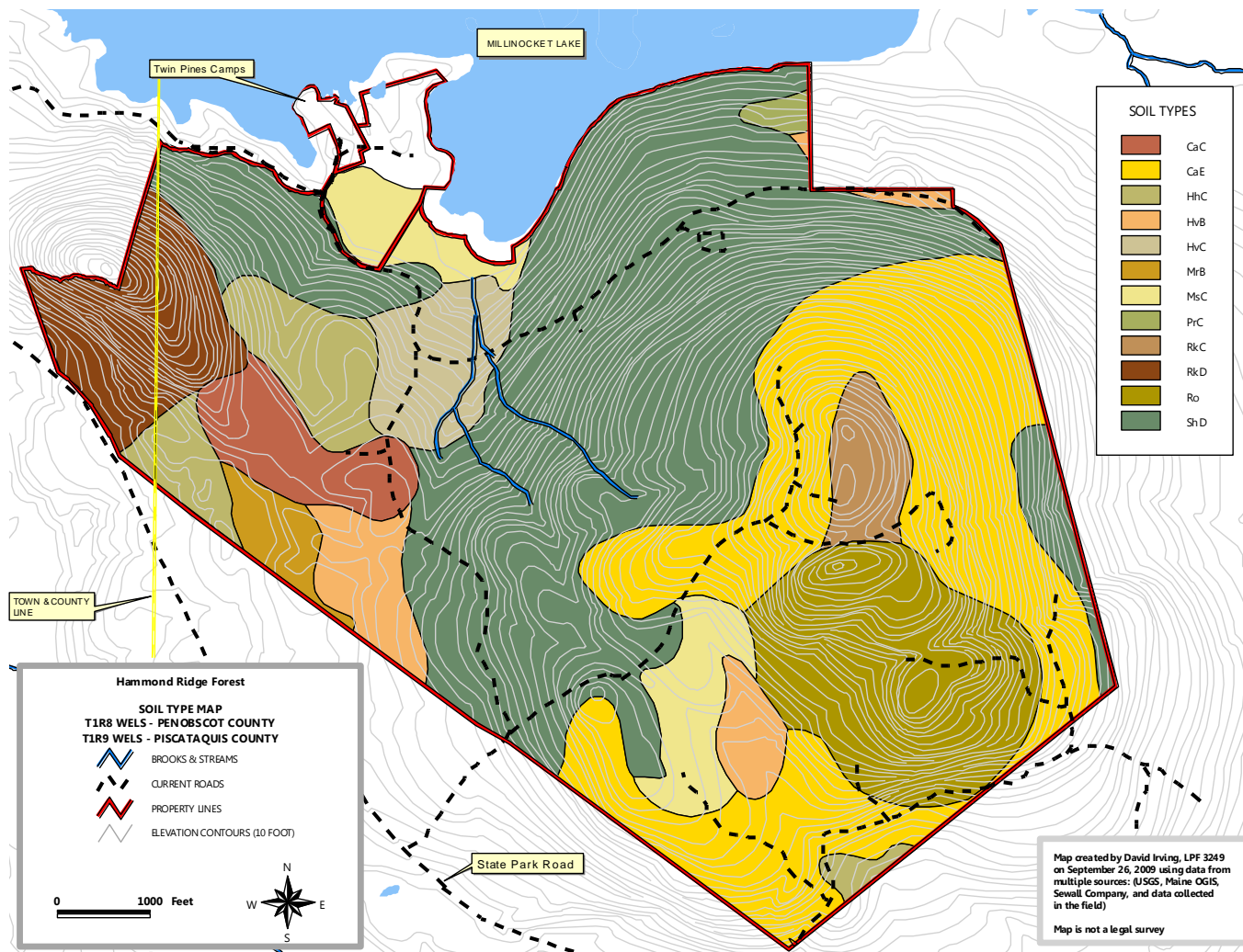
**Management Activity Map
Mackowski Forest Property
Milford, Maine
118 Total Acres**



- Legend
- Group Selection
 - Overstory Removal
 - Potential PCT
 - Shelterwood Establishment
 - Property Area
 - Brooks
 - PRIMARY SKID TRAIL
 - RAILROAD
 - RECREATIONAL TRAIL
 - TIMBER ACCESS ROAD
 - Wetlands



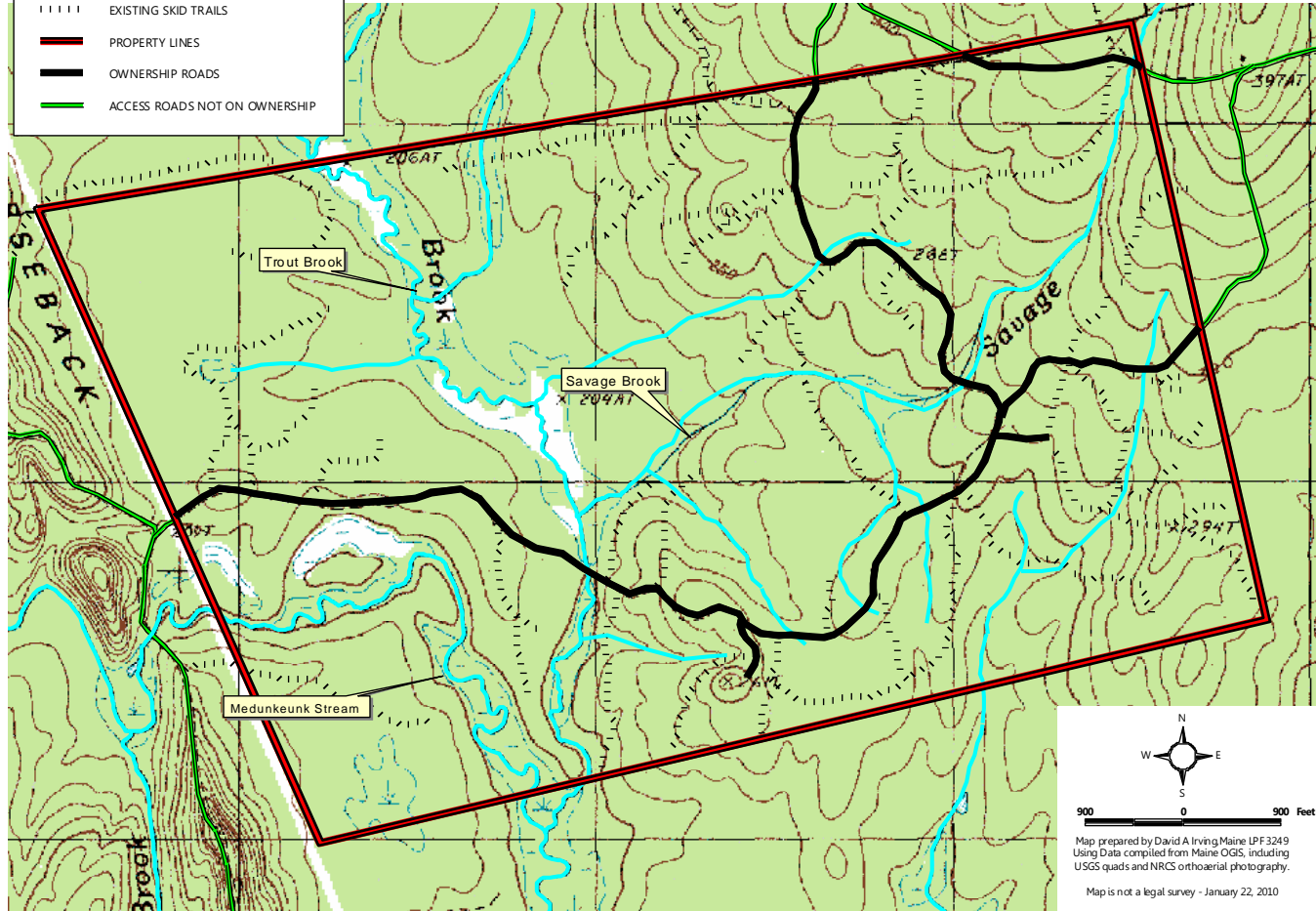
Map created by David A. Irving
Maine Licensed Forester 3249
Map created using data from Maine Office of GIS,
including USGS maps, and some field GPS data.
Map created on March 20, 2005
Map is not a legal survey



Trout Brook Forest
Chester, Maine
Road & Trail Map

Legend

- WATER CHANNELS
- EXISTING SKID TRAILS
- PROPERTY LINES
- OWNERSHIP ROADS
- ACCESS ROADS NOT ON OWNERSHIP





FOREST TYPE MAP
Rush Forest Property
Tax Map AR107 Plan 3 Lot 3
Benedicta, Maine

Map prepared by David Irving, ME LPF 3249
 Using data compiled from ME OGIS,
 and field GPS information.
 Map prepared on October 30, 2009
 Map is not a legal survey

